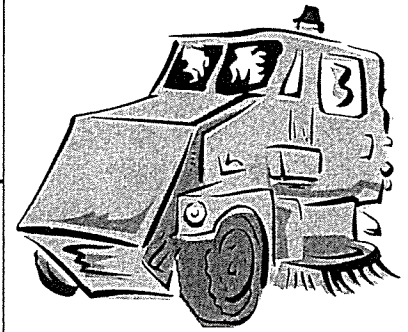


Selinsgrove Borough 2017 Street Cleaning Schedule

Effective April 10, 2017 thru October 13, 2017

No parking on streets listed between 2 a.m. and 6 a.m.
on Days indicated by this schedule



- MONDAY -

HIGH STREET-Spruce Street to Bridge Street
INDUSTRIAL PARK ROAD-Sassafras Street to Sand Hill Road (curbed area only)
MARKET STREET-Sand Hill Road to Bridge Street (1 of 2 days)
ORANGE STREET-Pine Street to Route 522
PINE STREET-Pine St. Bridge to 506 University Ave. (1 of 2 days)
SAND HILL ROAD-Market Street to Borough Boundary line
UNIVERSITY AVENUE-Market St. to Eighteenth St. (1 of 2 days)

Highly traveled streets are swept twice weekly as indicated.

Our goal is to keep our Borough clean and our neighborhoods livable. Moving vehicles off a street scheduled for sweeping allows Borough crews to thoroughly clean the street from curb-to-curb. One parked car equals nearly three car lengths of space that cannot be swept because the street sweeping equipment must leave room to avoid it. If vehicles are not moved to make way for the sweeper, they will be ticketed. Street sweeping adds life to a street and reduces the cost of more frequent resurfacing.

- TUESDAY -

ALICE CIRCLE—Entire Length
BOGAR CIRCLE—Entire Length
FRONT STREET—Chestnut Street to Bough Street
MILL STREET—Broad Street to Water Street
NINTH STREET—Sugar Maple Street to Bridge Street
PEAR STREET—Market Street to Ninth Street
PENN STREET—Market Street to Broad Street
PENNS LANDING—Market Street to Strawberry Alley
SECOND STREET—Chestnut Street to Bough Street
SHERMAN STREET—Strawberry Alley to Broad Street
SUGAR MAPLE STREET—High Street to End of Curbing
THIRD STREET—Pine Street to Bough Street
VINE STREET—Market Street to Woodruff Avenue
WOODRUFF AVENUE—Vine Street to Sherman Street

- THURSDAY-

BOUGH STREET—Front Street to Third Street
BOUGH STREET—Water Street to Liberty Alley
CHESTNUT STREET—Second Street to Front Street
CHESTNUT STREET—Water Street to Susquehanna Avenue
INDEPENDENCE STREET—Orange Street to Magnolia Avenue
PINE STREET—Water Street to Front Street
SASSAFRAS STREET—Water Street to Market Street
SASSAFRAS STREET—Market St. West 665 ft. (curbed area)
SNYDER STREET—Water Street to Magnolia Avenue
SPRUCE STREET—Market Street to Magnolia Avenue
SPRUCE STREET—Pump House Alley to Market Street
UNIVERSITY AVENUE—Market Street to intersection of Pine St. and University Avenue (2 of 2 days)
WALNUT STREET—Front Street to Market Street

- WEDNESDAY -

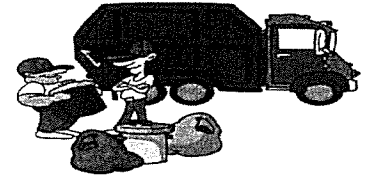
BROAD STREET-University Avenue to Route 522
CHARLES AVENUE-Pine Street to Spruce Street
EIGHTH STREET-Snyder Street to Route 522
MAGNOLIA AVENUE-Chestnut Street to Spruce Street
NINTH STREET-Spruce Street to and including Ninth St. Circle
PEAR STREET-Ninth Street to Tenth Street
RHOADS AVENUE-Chestnut Street to Spruce Street
SUSQUEHANNA AVENUE-Pine Street to Spruce Street
TENTH STREET-Mill Street to Pear Street

- FRIDAY-

EIGHTEENTH STREET -University Avenue to Route 522
HIGH STREET—Snyder Street to Sand Hill Road
LINDA LANE—Route 522 to Selinsgrove Area Pool
MARKET STREET—Sand Hill Road to Bridge Street (2 of 2 days)
MELODY LANE—Entire Length
PINE STREET—Water St. to 506 University Avenue (2 of 2 days)
STAUFFER AVENUE—Market Street to High Street
UNIVERSITY AVE—506 University Ave. to Eighteenth St. (2 of 2 days)
WATER STREET—Mill Street to Sassafras Street

*Residents should not rake their leaves, snow and other debris into the street—it's bad for our streams and waterways and **it's against the law**. Decomposing leaves on streets and sidewalks can wash into storm drains and eventually end up in streams and rivers. Leaves over-fertilize water and encourage harmful aquatic plants and algae to thrive. The result is murky water that isn't good for swimming and fishing and which harms wildlife.*

SELINGROVE BOROUGH SPRING CLEANUP 2017



“ONLY TWO (2) DAYS”

Monday, April 10, 2017

Isle of Que and west to and including Orange Street

Tuesday, April 11, 2017

Streets west of Orange Street to and including Eighteenth Street and University Avenue

*One mans trash is
another mans
treasure.*

**Schedule will be delayed/extended,
as needed due to weather
conditions,
until all materials are collected.**

No household garbage or recyclables.
Any resident with an unusually large amount of items for cleanup should contact the Borough Office for instructions to dump additional items into dumpsters provided by contractor.

Procedure and Requirements: Materials are to be placed along the curb **in front of your residence**, but not in the street or obstructing sidewalks, before 7:00 a.m. on the scheduled day, and no sooner than Friday before the scheduled day for pickup. All materials must be secured from being blown away or scattered by animals or persons seeking “treasures.” The owner of the material is responsible for compliance with the Borough’s littering and waste regulations.

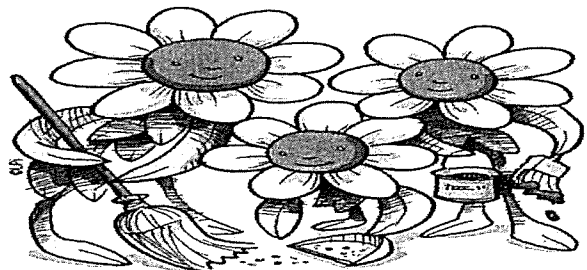
Restrictions: The following materials will NOT be picked-up during Spring Cleanup: clean fill materials (such as bricks, concrete, cement blocks, rocks, stones, sand, gravel, soil, etc.), cement, railroad ties, brush, tree limbs and trimmings, grass clippings, garden residue including vines and soft stem plants, leaves, garbage, recyclables (such as aluminum, bi-metal or tin cans; clear, green, or brown glass bottles and jars, all plastics, corrugated cardboard (except if used as a container), high-grade office paper, newspapers, magazines, plastic grocery bags, etc.), tires, asbestos, paints in liquid form, liquids, vehicle batteries, recyclable computers and electronic goods (such as computer equipment, adding machines, calculators, cameras, video cameras, cordless phones, copiers/scanners, DVD players/stereos, VCRs, fax machines, monitors, power supplies, printers, televisions, typewriters, and cell phones, etc.), and any material restricted by the landfill or deemed to be hazardous or unsafe for pickup by the contractor. Containers holding fine materials must be solid, moisture-proof, and capable of permitting the container to be manually picked-up and loaded into a garbage truck, and not exceed 30 pounds in weight per container. Latex paint cans must have lids removed and paint must be dry or thickened with sand, “Kitty-Litter” or similar material to no longer be liquid. Lumber and building materials, including doors, carpet, etc., to be limited to 4 foot lengths and a total of 1 cubic yard (equal to a combined container capacity of 200 gallons) per household and must be bundled, securely tied and/ or placed within solid, moisture-proof containers. Refrigerators, freezers or similar containers must have their doors removed for safety purposes. Propane tanks must be empty and have the valve open. No drywall compound.
THE BOROUGH IS NOT RESPONSIBLE FOR PROPERTY TAKEN IN ERROR.

A **“Special Refrigeration Unit Pickup Tag”** is required to be purchased in advance from the Selingsrove Borough Office and affixed to any appliances such as a refrigerator, freezer, air conditioner, dehumidifier, or other appliances with a refrigeration unit, or such appliance will NOT be picked-up. The cost of the “Tag” is \$7.50 per appliance. Refrigeration units may NOT be removed or drained. “Tags” will NOT be sold by workmen picking-up materials.

*Local Church youth groups offer assistance
with removal of items for residents.*

**PERSONS PLACING AND/OR PERMITTING
THE PLACEMENT OF MATERIALS FROM
OUTSIDE THE BOROUGH OF SELINGROVE
WILL BE PROSECUTED TO THE FULL
EXTENT OF THE LAW.**

Other recycling opportunities:
<http://earth911.com/location/pennsylvania>
Snyder County Recycling Coordinator:
Tom Gibson 570-374-6889 (Ext. 115)



***ITEMS FOR PICKUP MAY BE REJECTED BY
BOROUGH EMPLOYEES OR PACKER OPERA-
TOR.**

***TIME LIMIT PER HOUSEHOLD: 10 MINUTES**