

2011 Recycling Schedule

Selinsgrove Borough
1 North High Street, Selinsgrove, PA 17870
570-374-2311



Curbside Recycling Opportunities

Aluminum and Glass Pickup

Last Wednesday of Each Month
(items must be placed at curbside prior to 8:00 a.m.)

ALL ITEMS MUST BE RINSED OUT & CAPS REMOVED.

1. **Aluminum Beverage Cans** (typically, soda and beer cans).
2. **Clear Glass**—Bottles & Jars (no candle jars, plates, or drinking glasses).
3. **Blue/Green Glass**—Bottles & Jars.
4. **Brown Glass**—Bottles & Jars.
Glass must be separated by color or the recycler will not pick them up. Place items in any solid, open-top container. Selinsgrove Borough no longer has containers available. Do not use plastic or paper bags.



Due to size of equipment used during curbside collections, no "alley" pickups.

Brush Pickup

May 2, 2011 & October 24, 2011

Brush, branches, tree limbs, tree trimmings (no bigger than 4" in diameter, and limited to 1 cubic yard—equal to a combined container capacity of 200 gallons) will be picked up curbside. Garden residue, twigs, vines, soft stem plants and weeds (no grass clippings, roots, dirt or soil debris, or garbage bags) must be placed in moisture-proof, open-top containers capable of permitting materials to be picked up and dumped into a truck (limit of 30 pounds/container). Items are to be placed along the curb, but not out into the street, before 7:00 a.m.



Leaf Pickup

October 31 through November 23, 2011
(or the first snowfall)

(pickup will follow the street cleaning schedule)

Leaves are to be placed along the curb, but not into the street, before 7:00 a.m. on the scheduled day for your street. Leaves may be bagged but may not include brush, twigs, branches, grass, vines, soft-stem plants, any other similar materials that would clog the borough's leaf vacuum, or any non-vegetative matter.



Live Christmas Tree Pickup

Christmas trees, which are placed along the curb, will be picked up on a daily basis during the first 10 working days in January. No plastic bags, decorations or other attachments (tree stands) will be picked up.

Borough employees are authorized to reject all items not properly prepared for recycling.

Other Recycling Opportunities Available

Recycling Drop-Off Center West Sassafras Street

Every Thursday—8:00 a.m. to 3:00 p.m.
First & Third Saturday of each month -
8:00 a.m. to 12:00 Noon

(Closed on Holidays— No Make Up Day)
(Closed—November 24th—Thanksgiving Day)

1. **Tin/Steel Cans:** (Rinsed Cans Only) No scrap metal, paint or aerosol cans.
2. **Aluminum:** (Rinsed Cans Only) Beverage cans. No foil, paint, aerosol cans or scrap metal.
3. **Glass: Clear, Blue/Green and Brown:** (Rinse and remove caps.) Jar and bottle form only. No window glass, dishes, drinking glasses or candle jars.
4. **Plastics: Nos. 1's and 2's:** (Rinse and remove caps.) Bottle shaped, mouth smaller than body. (No motor oil, brake fluid, anti-freeze, chemical or butter containers.)
5. **Corrugated Cardboard ONLY:** (Breakdown) No paper board (i.e. shoe boxes, cereal boxes, gift boxes, etc.) or waxed cardboard.
6. **Hi-Grade Office Paper:** Full sheets or shredded. (No plastic window envelopes, oak tag paper, paper back books or hard cover books.)
7. **Newspapers:** Must be clean and dry. (Remove all glossy inserts and put with magazines.) Not tied or in bags.
8. **Magazines, Catalogs & Phone Books:** Must be clean and dry. Not tied or in bags.
9. **Batteries:** Vehicle type batteries only.
10. **Paperboard:** (Must be separated from corrugated). Toilet paper/paper towel rolls, soda boxes, cereal boxes, shoe boxes, tissue boxes, junk mail including window envelopes, etc.

NOTE: NO drop-off prior to or after scheduled times. Violators will be prosecuted. Residents must separate recyclables and deposit items in appropriate containers provided.

2011 Snyder County Recycling Event

Monroe Township Shed (On Park Road—1 mile from Routes 11 & 15)

*Appliances * Metals * Electronics * Computers * Clothing * Books*

Friday, May 6 from 4:00 p.m. to 7:00 p.m.

Saturday, May 7 from 9:00 a.m. to 1:00 p.m.

The collection is free except for: televisions and copiers are \$10.00 each; refrigerators, freezers, air conditions and any appliance with Freon are \$10.00 each.

No tires. No propane tanks. No large stereo speakers. No carpet or rugs.

Borough Compost Yard Drop-Off

South end of Strawberry Alley
(*always open*)

Garden Residue, Brush and Leaves **ONLY.** Place at locations noted by signs in yard area. (No grass clippings. No bags. No demolition material or fill.) Composted leaves and mulch are available to Borough Residents.



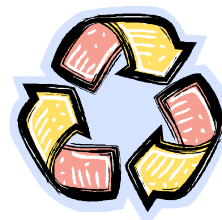
Compact Fluorescent Light Bulbs



In cooperation with PP&L, compact fluorescent light bulbs can be recycled at the Selinsgrove Borough Office, daily from 8:30 a.m. to 4:30 p.m.



Selinsgrove Borough is mandated by Act 101 of the State of Pennsylvania to require its residential, commercial, municipal and institutional establishments to recycle items. A recycling fee is included with your quarterly water/sewer bill to support the Recycling Program and the annual Spring Cleanup. The Selinsgrove Borough Recycling program and its equipment are partially funded by PA DEP ACT 101-902 and 904 recycling grants. We encourage all Selinsgrove Borough residents to fully utilize these services.

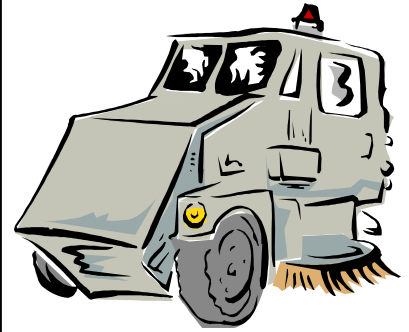


**Reduce
Reuse
Recycle**

Selinsgrove Borough 2011 Street Cleaning Schedule

Effective April 11, 2011 thru October 14, 2011

No parking on streets listed between 2 a.m. and 6 a.m.
on Days indicated by this schedule



- MONDAY -

HIGH STREET-Spruce Street to Bridge Street
INDUSTRIAL PARK ROAD-Sassafras Street to Sand Hill Road (curbed area only)
MARKET STREET-Sand Hill Road to Bridge Street (1 of 2 days)
ORANGE STREET-Pine Street to Route 522
PINE STREET-Pine St. Bridge to 506 University Ave. (1 of 2 days)
SAND HILL ROAD-Market Street to Borough Boundary line
UNIVERSITY AVENUE-Market St. to Eighteenth St. (1 of 2 days)

Highly traveled streets are swept twice weekly as indicated.

Our goal is to keep our Borough clean and our neighborhoods livable. Moving vehicles off a street scheduled for sweeping allows Borough crews to thoroughly clean the street from curb-to-curb. One parked car equals nearly three car lengths of space that cannot be swept because the street sweeping equipment must leave room to avoid it. If vehicles are not moved to make way for the sweeper, they will be ticketed. Street sweeping adds life to a street and reduces the cost of more frequent resurfacing.

- TUESDAY -

ALICE CIRCLE-Entire Length
BOGAR CIRCLE-Entire Length
FRONT STREET-Chestnut Street to Bough Street
MILL STREET-Broad Street to Water Street
NINTH STREET-Sugar Maple Street to Bridge Street
PEAR STREET-Market Street to Ninth Street
PENN STREET-Market Street to Broad Street
PENNS LANDING-Market Street to Strawberry Alley
SECOND STREET-Chestnut Street to Bough Street
SHERMAN STREET-Strawberry Alley to Broad Street
SUGAR MAPLE STREET-High Street to End of Curbing
THIRD STREET-Pine Street to Bough Street
VINE STREET-Market Street to Woodruff Avenue
WOODRUFF AVENUE-Vine Street to Sherman Street

- THURSDAY-

BOUGH STREET-Front Street to Third Street
BOUGH STREET-Water Street to Liberty Alley
CHESTNUT STREET-Second Street to Front Street
CHESTNUT STREET-Water Street to Susquehanna Avenue
INDEPENDENCE STREET-Orange Street to Magnolia Avenue
PINE STREET-Water Street to Front Street
SASSAFRAS STREET-Water Street to Market Street
SASSAFRAS STREET-Market St. West 665 ft. (curbed area)
SNYDER STREET-Water Street to Magnolia Avenue
SPRUCE STREET-Market Street to Rhoads Avenue
SPRUCE STREET-Pump House Alley to Market Street
UNIVERSITY AVENUE-Market Street to intersection of Pine St. and University Avenue (2 of 2 days)
WALNUT STREET-Front Street to Market Street

- WEDNESDAY -

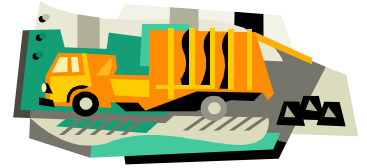
BROAD STREET-University Avenue to Route 522
CHARLES AVENUE-Pine Street to Spruce Street
EIGHTH STREET-Snyder Street to Route 522
MAGNOLIA AVENUE-Chestnut Street to Spruce Street
NINTH STREET-Spruce Street to and including Ninth St. Circle
PEAR STREET-Ninth Street to Tenth Street
RHOADS AVENUE-Chestnut Street to Spruce Street
SUSQUEHANNA AVENUE-Pine Street to Spruce Street
TENTH STREET-Mill Street to Pear Street

- FRIDAY-

EIGHTEENTH STREET -University Avenue to Route 522
HIGH STREET-Snyder Street to Sand Hill Road
LINDA LANE-Route 522 to Selinsgrove Area Pool
MARKET STREET-Sand Hill Road to Bridge Street (2 of 2 days)
MELODY LANE- Entire Length
PINE STREET-Water St. to 506 University Avenue (2 of 2 days)
STAUFFER AVENUE-Market Street to High Street
UNIVERSITY AVE-506 University Ave. to Eighteenth St. (2 of 2 days)
WATER STREET-Mill Street to Sassafras Street

*Residents should not rake their leaves, snow and other debris into the street -it's bad for our streams and waterways and **it's against the law.** Decomposing leaves on streets and sidewalks can wash into storm drains and eventually end up in streams and rivers. Leaves over-fertilize water and encourage harmful aquatic plants and algae to thrive. The result is murky water that isn't good for swimming and fishing and which harms wildlife.*

SELINGROVE BOROUGH SPRING CLEANUP 2011



“ONLY TWO (2) DAYS”



Monday, April 18, 2011

Isle of Que and west to and including Orange Street

Tuesday, April 19, 2011

Streets west of Orange Street to and including Eighteenth Street and University Avenue

*One mans trash is
another mans
treasure.*

Schedule will be delayed/extended,
as needed due to weather conditions,
until all materials are collected -
check the Borough's Web Site at
www.selingsgrove.org
for updates on the progression of the work.

No household garbage or recyclables.
Any resident with an unusually large amount of items for cleanup
should contact the Borough Office for instructions to dump
additional items into compactors provided by contractor.

Procedure and Requirements: Materials are to be placed along the curb, but not in the street or obstructing sidewalks, before 7:00 a.m. on the scheduled day, and no sooner than Friday before the scheduled day for pickup. All materials must be secured from being blown away or scattered by animals or persons seeking “treasures.” The owner of the material is responsible for compliance with the Borough’s littering and waste regulations.

A **“Special Refrigeration Unit Pickup Tag”** is required to be purchased in advance from the Selingsgrove Borough Office and affixed to any appliances such as a refrigerator, freezer, air conditioner, dehumidifier, or other appliances with a refrigeration unit, or such appliance will NOT be picked-up. The cost of the “Tag” is \$7.50 per appliance. Refrigeration units may NOT be removed or drained. “Tags” will NOT be sold by workmen picking-up materials. .

Restrictions: The following materials will NOT be picked-up during Spring Cleanup: clean fill materials (such as bricks, concrete, cement blocks, rocks, stones, sand, gravel, soil, etc.), cement, railroad ties, brush, tree limbs and trimmings, grass clippings, garden residue including vines and soft stem plants, leaves, garbage, recyclables (such as aluminum, bi-metal or tin cans; clear, green, or brown glass bottles and jars, #1 or #2 plastics, corrugated cardboard (except if used as a container), high-grade office paper, newspapers, magazines, plastic grocery bags, etc.), tires, asbestos, paints in liquid form, liquids, vehicle batteries, recyclable computers and electronic goods (such as computer equipment, adding machines, calculators, cameras, video cameras, cordless phones, copiers/scanners, DVD players/stereos, VCRs, fax machines, monitors, power supplies, printers, televisions, typewriters, and cell phones, etc.), and any material restricted by the landfill or deemed to be hazardous or unsafe for pickup by the contractor. Containers holding fine materials must be solid, moisture-proof, and capable of permitting the container to be manually picked-up and loaded into a garbage truck, and not exceed 30 pounds in weight per container. Paint cans must have lids removed and paint must be dry or thickened with sand, “Kitty-Litter” or similar material to no longer be liquid. Lumber and building materials, including doors, carpet, etc., to be limited to 4 foot lengths and a total of 1 cubic yard (equal to a combined container capacity of 200 gallons) per household and must be bundled, securely tied and/ or placed within solid, moisture-proof containers. Refrigerators, freezers or similar containers must have their doors removed for safety purposes. Propane tanks must be empty and have the valve open. No drywall compound.

*Local Church youth groups offer assistance
with removal of items for residents.*

PP&L Recycling Program

PP&L will recycle your old refrigerator/freezer/air conditioner. You can receive up to \$35.00 for an old refrigerator/freezer and \$25.00 for an air conditioner. You must be a PP&L Electric Utilities customer. Your old refrigerator or freezer must be in working condition, plugged in and running when they arrive. Refrigerator or freezer must be between 10 & 30 cubic feet. Limit two units per household and you must be the owner of the units being recycled. For further questions or to schedule an appointment please call their contracted recycle JACO Environmental at 1-877-270-3522 or visit <http://www.ppelectric.com/e-power/recycle/home.htm>.

**PERSONS PLACING AND/OR PERMITTING THE PLACEMENT
OF MATERIALS FROM OUTSIDE
THE BOROUGH OF SELINGROVE WILL BE PROSECUTED TO
THE FULL EXTENT OF THE LAW.**

Other recycling opportunities: <http://pennsylvania.earth911.org>
Snyder County Recycling Coordinator:
Debbie Wolfe 374-5751